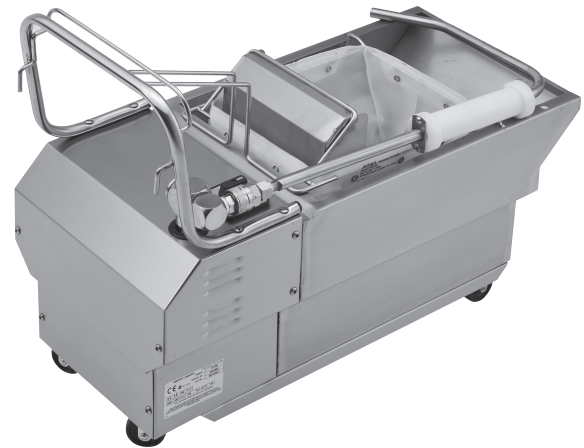


Technical data sheet for
VEE RAY FILTAMAX

EF30, EF35, EF40

- Mobility and space saving features
- Powerful reversible 1/3 HP pump
- Full stainless steel construction
- Reusable filter bag
- Upgrade kit to carbon pad filtering
- Easy clean
- Easy service



EF35

Overall Construction

- Full stainless steel construction
- Mounted on two fixed and two swivel castors
- 1/3 HP motor, reversible, heavy duty pump
- Heavy duty motor switch
- Rigid return delivery tube for safe, efficient, return of oil and shortening to fryer tank
- Reusable 'easy clean' filter bags, with upgrade kit to carbon pad filtering available
- Heavy duty stainless steel handle
- Cord storage
- Heavy duty heat resistant handle fitted to oil delivery tube

Controls

- Off/Forward/Reverse pump control

Cleaning and Servicing

- Open stainless steel pan for easy clean
- Easy clean stainless steel exterior

Technical data sheet for VEE RAY FILTAMAX

Specifications

Pump

1/3 HP single phase reversible pump

Electrical requirements

220 - 240 V.a.c., 50/60 Hz, 1 P+N+E, 3.2A

110 - 120 V.a.c., 50/60 Hz, 1 P+N+E, 6.4A

Electrical connection

62mm from RH side, 365mm from rear, and 440mm from floor

3 pin 13A plug cordset fitted

Filtering capacity

EF30 20 litres

EF35 30 litres

EF40 32 litres

Fryer compatibility

EF30 GT45/E

GT46/E

EF35 E43/E

E44/E

E40 GT60/E

GT60-HPO/E

Under fryer storage

EF30 GT45/E

GT46/E

EF35 N/A

EF40 GT60/E

GT60-HPO/E

Dimensions

EF30

Width 324mm

Depth 683mm

Height 562mm

EF35

Width 324mm

Depth 735mm

Height 562mm

EF40

Width 474mm

Depth 683mm

Height 562mm

Packing data

EF30

0.28m³

52kgs

EF35

0.28m³

53kgs

EF40

0.28m³

56kgs

Options at extra cost

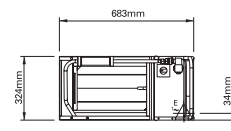
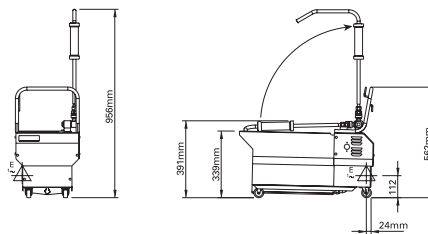
Additional filter bags

Carbon pad upgrade kit (Part No. 025669)

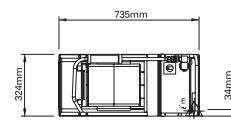
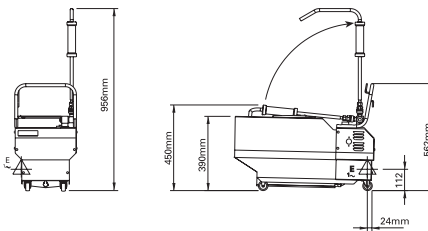
Flexible hose with stay cool handle (Part No. 020417)

Drain adaptor kit (Part No. 024705) and drain extension kit (Part No. 024710) available for using EF40 for combined 450mm + 600mm wide Blue Seal fryer filtering applications.

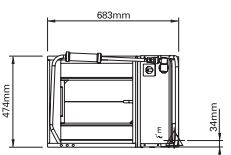
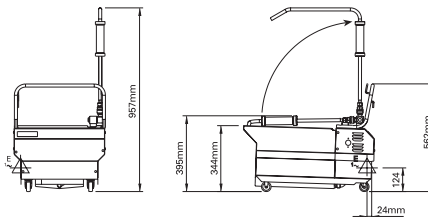
EF30



EF35



EF40



www.blue-seal.co.uk
www.bluesealevolution.com

United Kingdom Blue Seal Limited

Unit 67
Gravelly Business Park
Gravelly
Birmingham B24 8TQ
England
Telephone 0121-327 5575
Facsimile 0121-327 9711
Email sales@blue-seal.co.uk
www.blue-seal.co.uk

Australia Moffat Pty Limited

740 Springvale Rd
Mulgrave
Victoria 3170
Australia
Telephone 03-9518 3888
Facsimile 03-9518 3833
Email vsales@moffat.com.au
www.moffat.com.au

New Zealand Moffat Limited

16 Osborne St
PO Box 10-001
Christchurch 8011
New Zealand
Telephone 03-389 1007
Facsimile 03-389 1276
Email sales@moffat.co.nz
www.moffat.co.nz



ISO9001
Quality
Management
Standard

Designed and manufactured by



ISO9001
All Blue Seal products are designed and manufactured by Moffat using the internationally recognised ISO9001 quality management system, covering design, manufacture and final inspection, ensuring consistent high quality at all times.



In line with policy to continually develop and improve its products, Moffat Limited reserves the right to change specifications and design without notice.



Printed in China
© Copyright Moffat Ltd
Moffat/4825-UK/BH/2.5M/12.06

